

KITHS INTEGRATED & TARGETED HUMAN SERVICES, INC

FY2022 ANNUAL REPORT

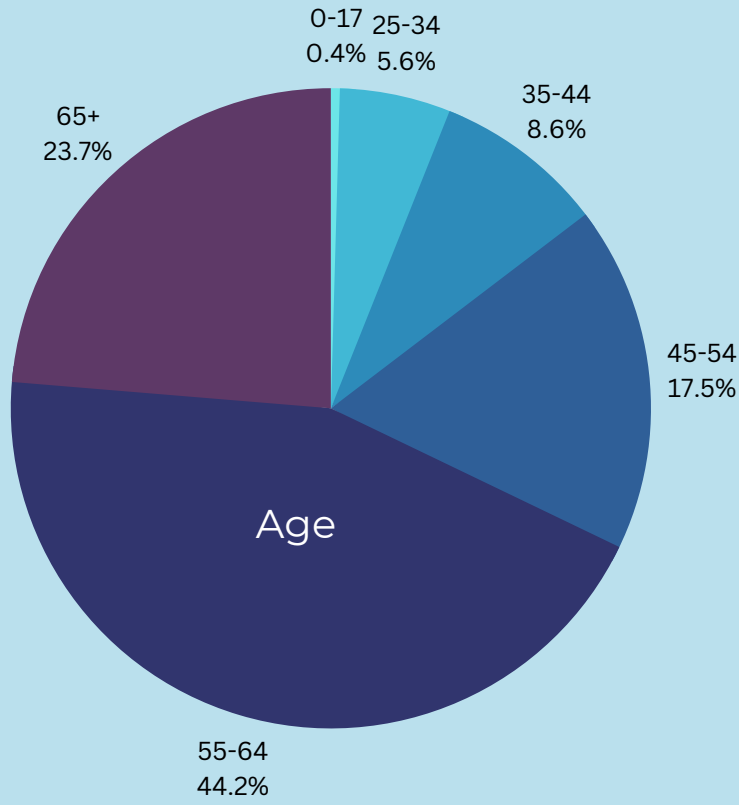
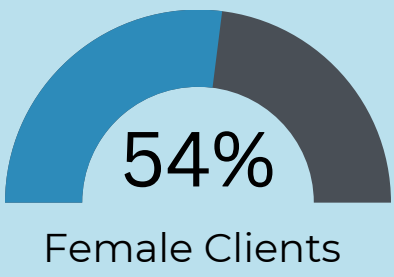


141 UNIQUE CLIENTS SERVED

Across 660 service encounters
Average number of visits per client: 4.7

CLIENT DEMOGRAPHICS

KITHS, Inc. serves a diverse client base that is representative of the Logan Community.

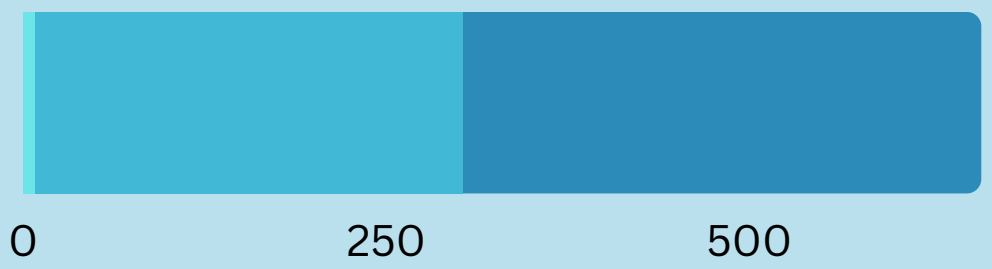


CITIZENSHIP AND COUNTRY OF ORIGIN



- Cambodia
- Vietnam
- Laos
- Thailand
- Jamaica
- Grenada
- Khmer
- United States

- US Born
- Legal Permanent Resident
- Naturalized Citizen



MAKING AN IMPACT

KITHS supports clients in accessing social services, health care, and other assistance programs



430

healthcare and insurance related supports



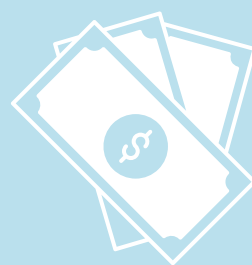
658

housing, rent, and utilities related supports



264

food and nutrition related supports



652

income, taxes, and supplemental security income related supports



371

other supports, including education related supports



kithservices.org

